



PTF Documentation FIS
PTF001 for release **2025.01**

Table of contents

TABLE OF CONTENTS.....	2
INTRODUCTION	3
NEW IN PTF001.....	4
NEW IN RELEASE 2025.01.....	5
TECHNICAL ENHANCEMENTS.....	6
PTF001	6
RELEASE.....	6
FUNCTIONAL ENHANCEMENTS.....	9
PTF001	9
RELEASE.....	12
CHANGES IN MENU OPTIONS	17
PTF001	17
RELEASE.....	17
CONNECTING WITH OTHER APPLICATIONS.....	17
SOLVED ERROR MESSAGES.....	18
PTF001	18
RELEASE.....	20
SUPPORT	23

<https://www.pantheon-automatisering.nl/diensten/ibm-i-diensten/fis-fms/>

fisfmsadministratie@pantheon-automatisering.nl

Introduction

This document can be regarded as a guide for e.g. the application manager when implementing a PTF for release 2025.01 of FIS within the organisation.



With version 2025.01 of FIS, Pantheon also releases a 2025 version of all related software products, like e-Mapping, Fixed Assets Control (FAC), Spoolfile Manager and Billing (FAK). When you move to FIS release 2025.01 or one of its PTF's, you need to install the corresponding 2025 version of all software you are using - download from <https://www.pantheon-automatisering.nl/diensten/ibm-i-diensten/fis-fms/> choose 'Portaal'

Please be aware of the following conditions and effects:

- A PTF contains additional and updated programs but not the entire FIS software library. Make sure that the base release 2025.01 of FIS is already present on the server. The installation of this release is not documented here; please refer to the release documentation
- If your current version of FIS is older than version 2016.01, you must load release 2016.01 or 2019.01 (+ fixes) first and modify your data library (or libraries). Then move to version 2025.01. Please contact Pantheon first if these circumstances apply to you
- All payment and collection proposals, as well as draft, cheque and TAX proposals must be completed (including Pay Definitely / Definitely Collect) before installing FIS 2025.01 software
- Install the Easy@ccess Basepack (version **10.1.4** as supplied with this release) if it is not yet present. Check the FIS202511.zip file
- Always install the Easy @ccess panels provided, both the general (in '/Panels/Shared Files') as the FIS-specific panels (in '/Panels/FIS2000'). The online help text is loaded automatically
- Users of the Online Approval module need to install the version provided with this PTF (Check FIS202511.zip), version **2025.01.01**, as well as the most recent Webviewer, available on the Portal

After installing this release, you will have to run the 'Modify file library for new Release/PTF' procedure for every FIS data library on your system. During this process, the posting files will NOT be converted



We strongly recommend testing new software in a separate environment, especially if you use custom built software or third-party applications connected with FIS.

Finally, for news and information worth knowing about FIS, please refer to:

<https://www.pantheon-automatisering.nl/diensten/ibm-i-diensten/fis-fms/>

New in PTF001

In short, the most important features and improvements in this release. Additional information can be found in the chapter 'Functional Enhancements'

Introduction of XML Auditfile version 4.0

In menu option 'Supply XML audit file financial' you can now choose for version 4.0

Quick access to FIS fix functions

For specific error situations, FIS contains a number of fix programs. As from this PTF it will be easier to use these functions, provided you contact FIS Support at Pantheon.

FIS Recycle bin - Financial transactions that were removed, are moved to a recycle bin

Financial transactions (in so-called User identifications) ID's) that are removed by a FIS-user are now moved to a recycle bin and saved there for two months, before being deleted permanently

Reconciliation - extra bank information retrieved from CAMT.053 files

A CAMT.053 file contains several possibilities for free formatted information on the bank transactions. As from this PTF more of these items are retrieved by FIS in order to improve the results of the 'tick-off' process

Remove chart of account - Additional information on invoice data

A chart of accounts can only be removed when invoice postings are still present. If this situation is detected, FIS now creates a report with details of the invoice data in question

Payment and Collection specifications in CSV-format

In addition to the current PDF-document with payment/collection specifications, FIS now creates a file in CSV-format with similar financial specifications. In a future release of Spoolfile Manager the CSV-data will be included in the mails sent out to debtors/creditors

Separate reference date for discounts

During 'Print payment proposal' FIS checks if discount arrangements apply. For these calculations, the date stated in 'Due date To' was used as the reference date. This method no longer applies.

As from this PTF, a separate entry field is available for this discount calculations. If you do not use this new entry field, FIS uses the system date as the required reference date

New in Release 2025.01

In short, the most important features and improvements in this release. Additional information can be found in the chapter 'Functional Enhancements'

Expansion of Payment Characteristics

Introduction of the field 'Payment characteristics Extended' with a maximum size of 54 positions

New SEPA formats (Payment and Collect)

SEPA Domestic Payments can now be generated in the "PAIN 001.001.09" format. For Direct Debit format "PAIN 008.001.08" was added

Extra data in the CSV-export for VAT proposal

The CSV export from 'Proposal turnover tax declaration' now contains Debtor/Creditor data: Name, Town and country code & VAT-number

Extra data in Reconciliation interfaces

In the input parameter: Bank statement number, Batch sequence number, Costs currency, Costs amount and origin code. Output: different company/branch and description-2

Use extended Debtor name in Automatic collections

You can use Address line 1 & 2 when banks require a full match on the bank account name

Revised check on posting date in Tick off wait-accounts

The date check now corresponds with the validations in 'Input financial transactions'

Improved recognition of CAMT.053 files

CAMT files from foreign banks were not always recognized properly

Automatic processing of payment differences

When indicated, FIS now automatically makes financial transactions for payment differences during 'Tick Off' in Reconciliation

New checks for the modification of the account number for Subledgers

Existing checks were replaced by a check on zero-balance for the linked account number

Proposal turnover tax declaration

Create a report or export of all transactions in a period; independent of the declaration status

Technical enhancements

PTF001

File changes in the database

In this PTF the following data files in the FIS data library were altered:

FAMD20	Deleted financial transactions - Daybook (New)
FAMD21	Deleted financial transactions - Details (New)
DCRPLT	Log file bank transactions through Reconciliation
FISPLOG	Log application menu start/exit (New)
FISLLOG1	Log application menu start/exit (Logical; new)
FISPLOGM	Log menu option start (New)

Release

File changes in the database

In this release the following data files in the FIS data library were altered:

DCAPBS	Payment schemes
DCAPLF	Log file invoice modifications
DCAPLW	Log file for Datawarehouse
DCRPBM	Tick Off data financial transactions
DCPPTM	Transaction data – General transactions
DCPPDM	Transaction data Db/Cr – General transactions
FAM21	Financial transactions
FAMS21	Financial transactions (Archive)
FAMW180	Work file postings
FKTPFK	Invoices Kofax
FKTPFS	Invoices Kofax Save
FAGLKN2/4	Notes / Payment references (Logical)

Transfer to a new operating system

For Release 2025.01 of FIS (and all its PTF's) version **V7R4M0** of the IBM Operating system is required. This condition is checked during the installation process.

Note: other OS-conditions may apply for e-Products (e.g. e-Mapping, SFM and FAC) linked to FIS.

If you have questions on this subject, please contact Pantheon Automatisering. Call +31 513 657 357, or send a mail to FISFMSAdministratie@pantheon-automatisering.nl

Upgrade Easy@ccess software

If it is not yet present on your system, you need to install Basepack **10.1.4** - also known as 'Rocket Modern eXperience Desktop Client'. Please refer to the loading instructions for additional information.

Always install the Easy@ccess panels as supplied with this release; panel sets always contain all panels. Remember that panels are distributed in two files: general panels (in '/Panels/Shared Files') and FIS panels (in '/Panels/FIS2000').

Also check the version of the Seagull License Manager (LMS) – you will find all details in the loading instructions. If an update is required, the software can be downloaded from the customer portal. <https://www.pantheon-automatisering.nl/diensten/ibm-i-diensten/fis-fms/> select 'Portaal'

Select your browser for the HTML Help texts

In FIS function key <F1> triggers the Help function which displays help text in a browser.

Not all browsers present the help text correctly. If you encounter problems, you can solve this problem by using an alternative browser for FIS help text. Refer to your settings in the **defaults.ini** file (standard settings) or **custom.ini** file (your own settings) to indicate your browser of choice using the **BrowserHelp** keyword in the section [HELP]

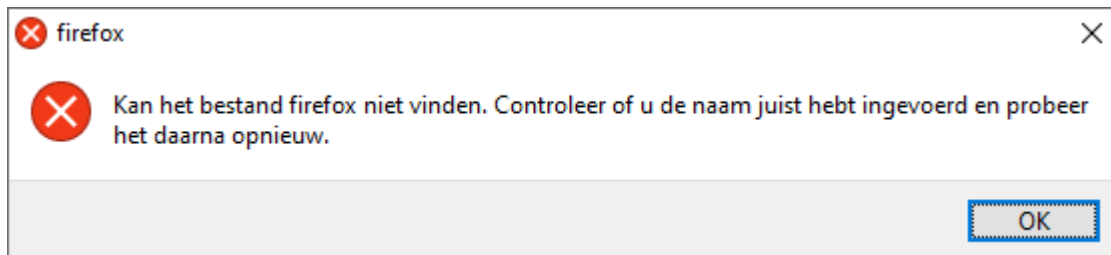
The options are:

BrowserHelp="1" (Chrome)
BrowserHelp="2" (Internet Explorer)
BrowserHelp="3" (Edge)
BrowserHelp="4" (FireFox)

Example:

```
[HELP]  
HelpSystem="HTML"  
HelpFolderWindows="C:\Easy @ccess\app\  
HelpFolderJava="<webserverpad>/"  
BrowserHelp="4"
```

If the selected browser is not installed on your pc/laptop, the following message is displayed:



Functional enhancements

PTF001

Introduction of XML Audit file version 4.0

An XML Audit file is based on an open standard for saving and exchanging data from financial applications. Main users are tax offices and accountants.

In the menu option 'Supply XML audit file financial' you can now choose for version 4.0

Menu: FISEXP Financial - batch-export

Option: Supply XML audit file financial

Easier access to FIS Fix-programs

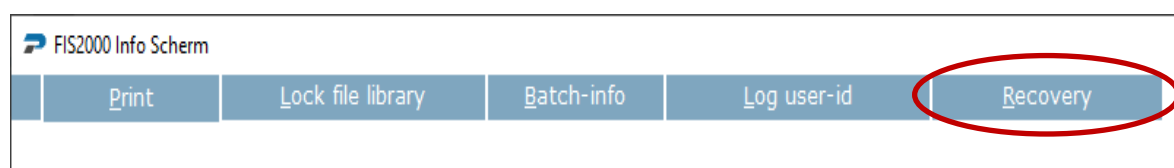
For specific (error) situations, FIS contains a number of fix functions. In most cases these programs are used because in case of power problems or in cases where users want to 'undo' FIS processing.

Most fix programs need to be started from the server 'command line' and this cause considerable delay for FIS users. As from this PTF, the fix functions below can be used by FIS users in consultation with Pantheon Support.

On starting a fix function, FIS generates a request code (a 6 digit number) that needs to be passed on to Pantheon Support. Pantheon then returns an authorization code the needs to be entered in FIS allowing the fix function to start. As of PTF001 these fix programs are available:

- Release a payment of collection proposal that was blocked
- Delete a Data Area
- Rebuild control counters for Db/Cr bank account numbers
- Remove indicator for 'Rebuild cumulatives'
- Recalculate outstanding balances for Debtors & Creditors (All companies)
- Recalculate outstanding balances for Debtors & Creditors (One companies)
- Set 'amount en route' to zero
- Undo an ICP declaration
- Remove indicator for 'subsequent postings'
- Undo 'tick-off' status
- Set reminder counter to zero
- Undo VAT-declaration (Belgium)
- Renumber invoices (Belgium)

The fix functions are available on the fourth detail screen of 'User information'



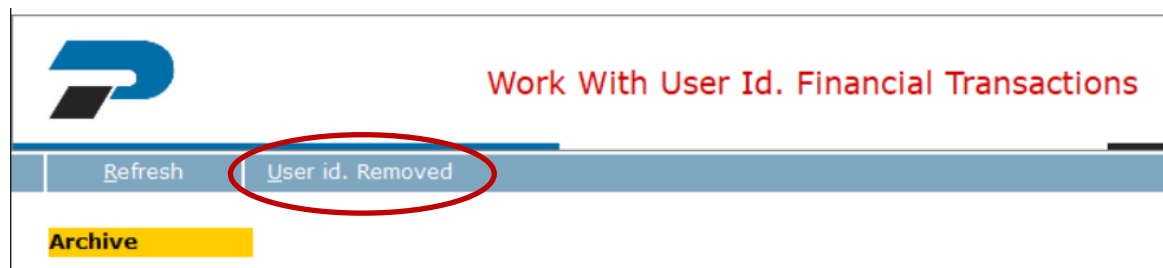
FIS recycle bin – temporarily save deleted User Identifications

When financial transactions are removed from FIS (through the menu options 'Work with User Identifications' or 'Remove User IDs Financial Transactions'), the remove action was performed immediately. As from this PTF financial transactions are moved to the FIS recycle bin first and removed permanently after two months.

In case financial transaction were deleted accidentally, they can be retrieved from the recycle bin. Perform this action through the menu option 'Work with archive financial transactions'; select button 'User Identifications removed'.

Empty user identifications or ID's that contain day book entries only are not moved to the recycle bin – they are removed instantly.

Refer to 'Work with archive financial transactions'



Reconciliation - Retrieve more unstructured information from CAMT.053 files

As from this PTF, FIS copies more information from free information fields in CAMT.053 files. This should improve the results of the 'tick-off' process.

CAMT.053 files contain several for unstructured information like invoice numbers of payment characteristics. In daily practice European banks follow their own standards on this subject, so valuable information for FIS may be stored in different elements in the CAMT file.

In the 2025.01 base version of FIS, information is retrieved from:

- Remittance Information <RmtInf>
- Additional Entry Information <AddtINtryInf>

As from this PTF, FIS also selects bank data from

- Additional Transaction Information <AddtITxInf>

Remove charts - detailed information on outstanding items

When you want to remove chart master data from FIS, the software checks for postings for both historic and actual invoices. If such postings are found, the removal process cannot start.

As from PTF001 FIS creates a report containing the postings in question, making it easier to deal with these circumstances. Up to 1.000 postings may be printed on this report.

Payment and Collection specifications in CSV-format

Payment and collection specifications are sent out as documents in PDF-format. As from this PTF FIS also creates a CSV-file with the same content that is sent out to suppliers / customers.

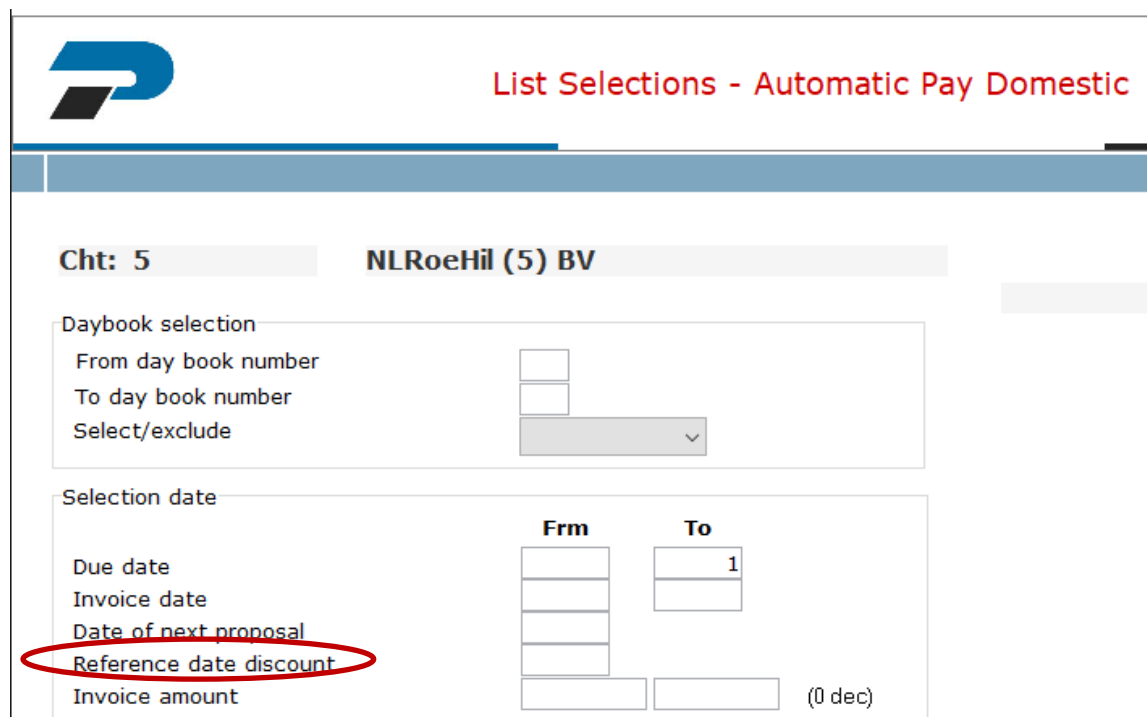
Note: mailing documents is performed by Spoolfile Manager. Contact Pantheon to make sure that you have the version of Spoolfile Manager that can handle CSV-files correctly.

Separate reference date for discount calculations

When a payments proposal is created (both domestic as foreign) FIS checks for possible discounts. During these calculations, the date entered for 'Due date To' was used as the reference date. This could have unwanted results as a larger selection of invoices could have a negative impact on possible discounts.

As from this PTF a separate date can be specified for the calculation of discounts. In practice this will be the date on which payments will actually take place.

If no date is specific here, FIS will use the system date.



List Selections - Automatic Pay Domestic

Cht: 5 **NLRoeHil (5) BV**

Daybook selection

From day book number

To day book number

Select/exclude

Selection date

	Frm	To
Due date	<input type="text"/>	<input type="text" value="1"/>
Invoice date	<input type="text"/>	<input type="text"/>
Date of next proposal	<input type="text"/>	<input type="text"/>
Reference date discount	<input type="text"/>	<input type="text"/>
Invoice amount	<input type="text"/>	<input type="text" value="(0 dec)"/>

Release

Expansion of Payment Characteristics

As from this release a second item for “Payment Characteristics” has been added to FIS, with a maximum length of 54 characters. In financial transactions a new field with this length has been introduced – the existing field of 20 characters remains available.

If you want to use this new input field, you need to place it on your input screen(s) for financial transactions (option: “Layout financial transaction screens”).

This alternative, extended field for payments characteristics is also available when you use applications like e-Transaction or e-Mapping to generate financial transactions for FIS.

Note: you can only use one of the two input fields.

On information screens in FIS the new field cannot always be displayed in its entire length. For prints and exports you can choose between the smaller and the larger field in most cases.

The extended characteristics are also available in FIS interfaces – please check the Interfaces manual. Parameter layout does not change so in all cases the extended payment characteristics were added to the existing layout. If you use long payment characteristics (longer than 20 characters) the standard field for payment characteristics will only contain the first 20 characters.

New SEPA Payment format (Domestic payments)

As from release 2012 FIS creates SEPA payment files based on the so-called PAIN 001.001.03 format. You can keep using this format but in release 2025.01 you can also select a new format: the PAIN 001.001.09 definition. Both types of payment files can be used in the Euro zone.

As from the fourth quarter of 2025 most EU-banks intend to switch to the 001.001.09 format as their preferred format. At that time they are expected to communicate about their support of the current 001.001.03-format.

The selection of the payment format is done through the menu option “Maintain general data”. Choose a company and then select “Bank data - Per bank”.

Bank/giro code Bank Hash check

Output medium PC-file

Curr. bank SEPA Variant 30

The format selection is made on the detail screen. Select for 'SEPA' as your currency bank followed by the format variant of your choice (30 or 39). All details are in the Help text.

The main modifications concern the address data of the receiving party, as they need to be more specific. FIS only stores a small number of the components available, so the address information in the payment file remains limited.

The table below shows the different address components in both payment formats:

PAIN 001.001.03	PAIN 001.001.09
Name	Name
Address Line (1 tot maximaal 7 keer)	Department Subdepartment Street Name Building Name Building Number Floor Room Postal Code Town Name Town Location Name District Name Country Sub Division
Country Code	Country Code

For the 001.001.09-format FIS uses:

- Street Name,
- Postal code,
- Town Name

Street Name

Because 'Street name' is not a fixed field in FIS, the following selections are made:

Address data		Selection for 'Street name'
Address Line 1	Filled	
Address Line 2	Filled	
Address Line 3	Filled	X

Address data		Selection for 'Street name'
Address Line 1	Filled	
Address Line 2	<i>(empty)</i>	
Address Line 3	Filled	X

Address data		Selection for 'Street name'
Address Line 1	Filled	
Address Line 2	Filled	X
Address Line 3	(empty)	

Address data		Selection for 'Street name'
Address Line 1	Filled	Element 'Street name' is not included in the payment file
Address Line 2	(empty)	
Address Line 3	(empty)	

Town Name and Postal Code

FIS has an indicator for 'Town Name': address line 4 or 5. This indicator is optional but you need to use it for creditors you intend to pay through 'Automatic payments' in FIS. The same condition applies for 'Postal Code'.

New SEPA Collection format (Direct Debit)

For SEPA Automatic collections similar changes have been made. Up to release 2025.01 the PAIN 008.001.02 format was available. You can use this format until further notice, but FIS release 2025.01 also contains a new collection format: PAIN 008.001.08.

As from the fourth quarter of 2025 most EU-banks intend to switch to this 008.001.08 format as their preferred format. At that time they are expected to communicate about their support of the current 008.001.02-format.

The selection of the collection format is done through the menu option "Maintain general data". Choose a company and then select "Bank data - Per bank". On the detail screen of collection banks you select 'SEPA' for 'Currency bank' and the format you wish (Variant 20 for 008.001.02 or variant 28 for 008.001.08). All details are in the Help text.

Code bank/giro	Bank	Hash-controle	
Uitvoermedium	PC-file	IBAN gebruiken	
Deviezenbank	SEPA	Variant	28

The modifications in format 008.001.08 (Variant 28) also relate to the address data of the debtors and are similar to the changes in SEPA-payments – **please refer to the details of the previous chapter on payments**

Please keep in mind that the address data of debtors can be stored in different locations. FIS uses the following steps to retrieve the data used in collection files:

1^e choice: name and address data is retrieved from the mandate. *If not present:*

2^e choice: Name and Town of the 'Account holder' from the bank master data. *If not present:*

3^e choice: name and address data from the debtor master data

For both automatic payments as for automatic collection, please be aware:



Evaluate the address data of your creditors before you switch to the new collection and/or payment formats. Apply one of the standard approaches described above; collections/payments without correct address details can be refused by your bank!

Extra columns in CSV-export in 'Proposal turnover tax declaration'

In order to make Debtors/Creditors more recognizable, the CSV export now includes extra columns:

- Address line-1,
- Town (if indicated),
- Country code and VAT-number
- VAT-amount
- Invoice amount including VAT

Extra master data available in interfaces in Reconciliation

If you use interfaces for the Reconciliation module of FIS, more data fields are available - both input and output. The interfaces involved: DCRECONIN, DCRECONIZ, DCRECONIF and DCRECONSP.

FIS provides additional bank data:

- Number of the bank statement
- Batch sequence number
- Currency code of the costs
- Cost amount
- Origin code

Refer to the Interfaces manual for all technical details

Interface DCRECONIN allows you to provide FIS with financial data that can be used in financial transactions. As from release 2025.01 the following items can be returned to FIS from the interface: 'Alternative company', 'Alternative branch' and 'Description-2'.

Use extended Debtor name in Automatic collections

Some banks apply strict validations on the name of the bank account holder. When the 20 positions in the bank account master data are not enough, you can use an indicator to use Address-1 & 2 instead select (in "Bank data - Per bank")

Date control in Tick Off Wait accounts

On the screen 'Tick Off Wait-accounts - User Identifications' the validation of the posting date is now in line with the checks in 'Input financial transactions'. The validation now includes the number of days 'plus' and 'minus' from the settings in 'List file data'

Improvement of recognition of CAMT files

Some (mostly foreign) banks include a large amount of data in their CAMT files. This could prevent FIS from recognizing the file type properly. The validation had been modified to improve recognition

Automatic processing of payment differences

Once the setup (account number and amount limits) is present FIS will now automatically create financial transactions for payment differences from the Reconciliation module.

Modified validation on the modification of the account number of a Subledger

The existing validation has been replaced by a check of the account balance. The account number for a subledger can be entered or changed if there is a zero balance for the account number in question

Proposal turnover tax declaration

A new 'Control Report' is now available in this program. It allows you to create a report or an export of all transactions in a period, independent of the declaration status.

Note: you cannot select this option and create a declaration proposal from it.

Changes in menu options

PTF001

No changes

Release

No changes

Connecting with other applications

All changes described so far, may affect connections with other applications on your PowerSystem. All existing interfaces are supported; in most cases new fields have been added at the end of parameter strings.

Additional information and more technical details are available in the handbook Interfaces in the Online Help text.



Together with FIS a 2025.01 release for all FIS related applications has become available. If you upgrade one of these applications to the 2025.01 level, you need to install the 2025.01 release of all other products as well.

If you have any questions regarding connections with FIS, please contact Pantheon Automatisering by mail, via FISFMSAdministratie@pantheon-automatisering.nl.

For up-to-date information; go to:

<https://www.pantheon-automatisering.nl/diensten/ibm-i-diensten/fis-fms/>

Solved error messages

In the list below, you can find all messages that have been solved for the corresponding release. The support-ID or internal R&D number is assigned to each of these messages.

PTF001

Menu option	Number	Description
General	FIS250101	General message for PTF001 for release 2025.01
Application management	FIS193	Make FIS fix functions available for end-users
Maintain accounts	FIS198	Synchronize screen checks
Work with User Identifications financial transactions	FIS199	Move deleted transactions to recycle bin
Remove charts	FIS200	Detailed report on outstanding items
Maintain general data	FIS201	Selection for XML (Account overviews / Reminders) was not always available
Account overviews / Reminders	FIS202	New interface (DCA151IN)
Maintenance Reconciliation Data per Bank	FIS204	Error in screen check on Initial position
Spoolfile Manager	FIS205	Document counts made available for Spoolfile Manager
Payments / Collections	FIS208	Payment & Collection specifications made available in CSV-format
Reconciliation – Tick off	FIS209	Always copy the name of the counter party from a CAMT.053 file
Pay/Collect definitively	FIS210	The extended payment characteristics were not always printed correctly on the specifications
Export log data banking transactions	FIS211	Extra items were added to the export file
Automatic pay (Domestic & Foreign)	FIS212	Introducing a separate reference date for the calculation of discounts
Maintain invoices to approve	FIS214	When a routing step is removed, this action is now logged
Automatic pay	FIS216	SEPA variants now also based on PAIN 001.001.09 base definition

Menu option	Number	Description
Screen information Db/Cr	FIS217	Detailed information on 'Dossier/invoice' was not complete when the request was started from 'Maintain invoices to approve'
XML Audit file	FIS219	Introduction of XML Audit file version 4.0
Reconciliation	FIS220	Import more data fields from CAMT.053 files to FIS
Export log data banking transactions	FIS221	Some items in the export log contained data where these fields should have been empty
Create ICP return	FIS222	The counters for the number of VAT numbers included were not always correct
Maintain Db/Cr master data	FIS224	Screen defaults for domestic bank data
General	FIS227	Log the start and exit of interactive FIS sessions
General	FIS229	Button 'User info' ended in error if no FIS data library was detected
Screen information postings	FIS230	Research: Show financial transactions
Control report financial transactions	FIS231	Possibility to suppress error code 39
Work with reconciliation files	FIS233	Screen handling could present problems when more than 1.000 bank files were present
General	FIS235	General program FAGSETLIST was not used in all FIS menu options
Consult Logging DB/CR Master Data	FIS236	Using the Exit button direct after selecting the menu option could result in an 'decimal data error'.
Reconciliation	FIS238	When a collection order fails, the bank provides a reason code and a description. FIS now copies the code, plus the first 15 characters into the financial transaction (Description-2)
Maintain Db/Cr master data	FIS240	Internal checks updated in case of e-Billing by PEPPOL network
Prepare document in folder	FIS241	Export to IFS added, using long file names; add optional time stamp

Menu option	Number	Description
Control report financial transactions / Process financial transactions	FIS242	Button 'Store settings' did not work

Release		
Menu option	Number	Description
General	FIS2501	General task for base release 2025
Print payment proposal	ACC282	The CSV-export appeared to be incomplete
Overview N.A.T.-data	FIS138	The report now includes the Mandate ID
Debtors/Creditors	FIS150	Expansion of Payment Characteristics
Debtors/Creditors	FIS151	Replace references to 'EG' by 'EU'
Automatic collection	FIS152	Use extended Debtor name in automatic collections
DB/CR screen information	FIS156	Exchange input fields for Dossier number and Payment Characteristics
Administration rejected invoices Online Approval	FIS157	Easy@ccess panel error on subfile Map/Drop
Interfaces	FIS158	Not all master data was available in the 'read' interfaces FAGLREK2 and FAGLSTN
Maintain accounts	FIS159	New interface (FAG035IN) in 'Maintain accounts'
Input financial transactions	FIS160	Some validation were removed to enable a Dutch day book being used in a Belgian environment. You can now use 'Document-oriented input invoices' using a day book that was not defined as a day book for invoices
Print payment/collection proposal	FIS161	The item 'Description/Payment Characteristics/Reference' was not always included completely in the CSV-Export
Tick off wait-accounts	FIS162	The posting date is also validated based on the number of days plus/minus from the general library settings

Menu option	Number	Description
Maintain accounts	FIS163	Adding of changing the account number of a subledger is allowed only when the account number balance is zero
Work With Reconciliation Files (Add new file)	FIS165	Improved recognition of CAMT files
Automatic collection	FIS166	An error could occur in the XML file when BIC codes were not present in FIS master data
Proposal turnover tax declaration	FIS167	The CSV-export contained too many invoices because the selection on VAT-code was not included
Work With Reconciliation Files (Add new file)	FIS168	When a 'Group designation' was not used in any bank account, the import of a CAMT-file could result in error
Supply XML audit file financial	FIS170	(XML-Auditfile 3.2) For missing posting dates the century value 19xx was selected instead of 20xx
Print payment proposal (Debtors)	FIS173	Pre-payments were not always included in the proposal. This is corrected when using the selection for 'domiciled' or 'credit note'
Alter payment proposal	FIS174	The indicator for multiple bank accounts ('+') did not work correctly
Alter collection proposal	FIS175	The mandate information was not always shown
Proposal turnover tax declaration	FIS176	When removing a previous proposal, not all invoices were released properly
Proposal turnover tax declaration	FIS177	New columns added to the CSV-export: first address line, town, land code and VAT number
Reconciliation – Tick off	FIS178	Additional item from the reconciliation data were made available in the recon interfaces
Maintenance reconciliation data per bank – Posting data	FIS179	When no master data was present, the program could end in error
Reconciliation	FIS180	Show opening and closing balance in "Work With Reconciliation Files"
Reconciliation	FIS181	When settings and margins are present, automatically create transactions for payment differences during 'Tick-off'

Menu option	Number	Description
Reconciliation	FIS184	Under circumstances, the specification lines were moved as a result of the use of interfaces
Record payments	FIS186	In the transactions created for payment differences, some fields were field unnecessarily
General overviews	FIS187	CSV exports started from the job-scheduler (planning) could end in error
Interfaces	FIS188	More fields are returned by interface DCRECONIN. Refer to the Interfaces manual for all details
Automatic payments – domestic	FIS189	Introduction of the PAIN 001.001.09 SEPA payment format, for domestic payments in the Euro zone
Reconciliation	FIS190	The authorization checks during the import of CAMT- and other reconciliation files were removed
Reconciliation	FIS191	During the import of a larger amounts of CAMT files could end in error when an existing file name was created. New software now finds a valid name.
Proposal turnover tax declaration	FIS192	New 'Control Report' to create a listing or export of all transactions in a period – independent of their declaration status
Automatic collections	FIS195	Introductions of the PAIN 008.001.08 format for Direct Debit
DB/CR screen information	FIS196	Under circumstances a wrong Easy@ccess panel was used on 'Screen Information Postings - Dossier/invoice'
FIS General	FIS197	A 'loop' situation could occur for specific menu options when FIS was not connected to a valid data library

Support

In order to guarantee the continuity of your applications, Pantheon Automatisering offers various types of support. What to do if you want to use these services?

- For a problem involving Pantheon standard applications, please contact the Support Desk by mail: FISFMSAdministratie@pantheon-automatisering.nl A concise problem description is sufficient for the Service Desk to tackle the problem (within opening hours).
- For support during the installation and/or implementation of Pantheon applications you need to make a reservation; please contact us 14 days in advance.
This type of support can be given at any time (during/after business hours), on location or by phone. For these services fixed tariffs apply.

You can reach Pantheon by phone: **+31 513 657 357**

You can also use this number, should you require additional information on other types of support, such as training and advice.